

1958 2hp

PARTS LIST FOR ELGIN OUTBOARD MOTOR

MODEL NUMBER 571.58232

Always mention both the Model Number and Serial Number of your outboard motor when ordering parts or requesting operating instructions. The serial number is found on the identification plate located on the steering handle bracket.

PRICE LIST REFERENCE

REFER TO THE DIVISION 6 AUTHORIZED PRICE
LIST 571.00 FOR CURRENT SELLING PRICES,
AVAILABILITY AND ORDERING INFORMATION

FILING INSTRUCTIONS

File this Parts List immediately after Parts List Number 571.58231 in the Division 6 Standard Nomenclature Grey Binder, Volume 2.

Sears, Roebuck and Co.—U.S.A.
In Canada, Simpsons-Sears Limited

SM 335

January, 1958

Printed in U.S.A.

Order by Part Number and Name, giving Motor, Model and Serial Number

Starter

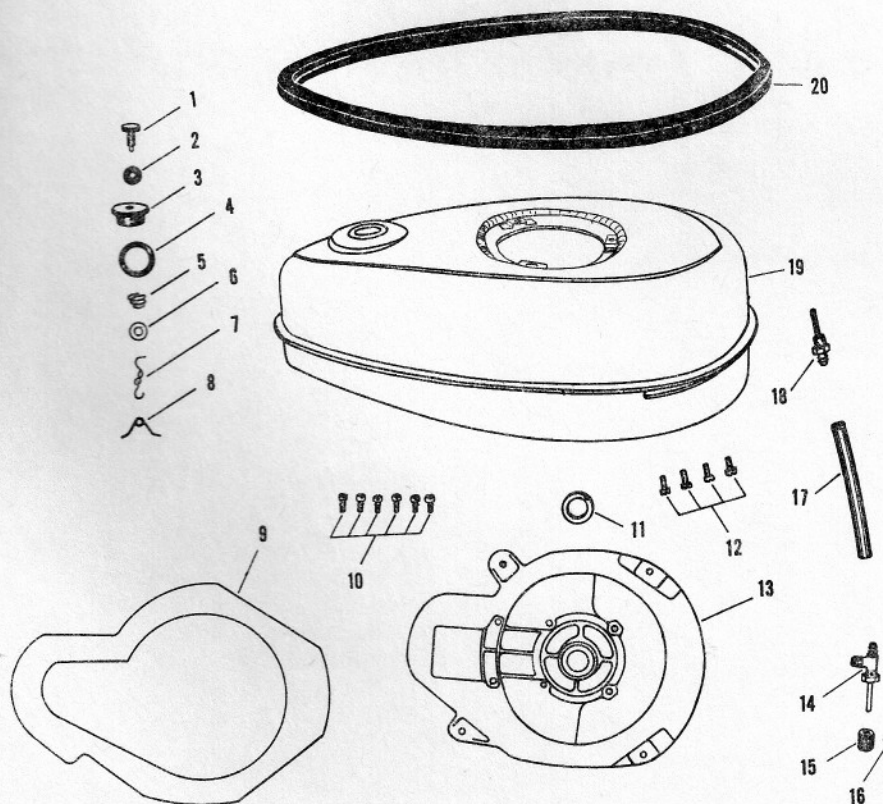
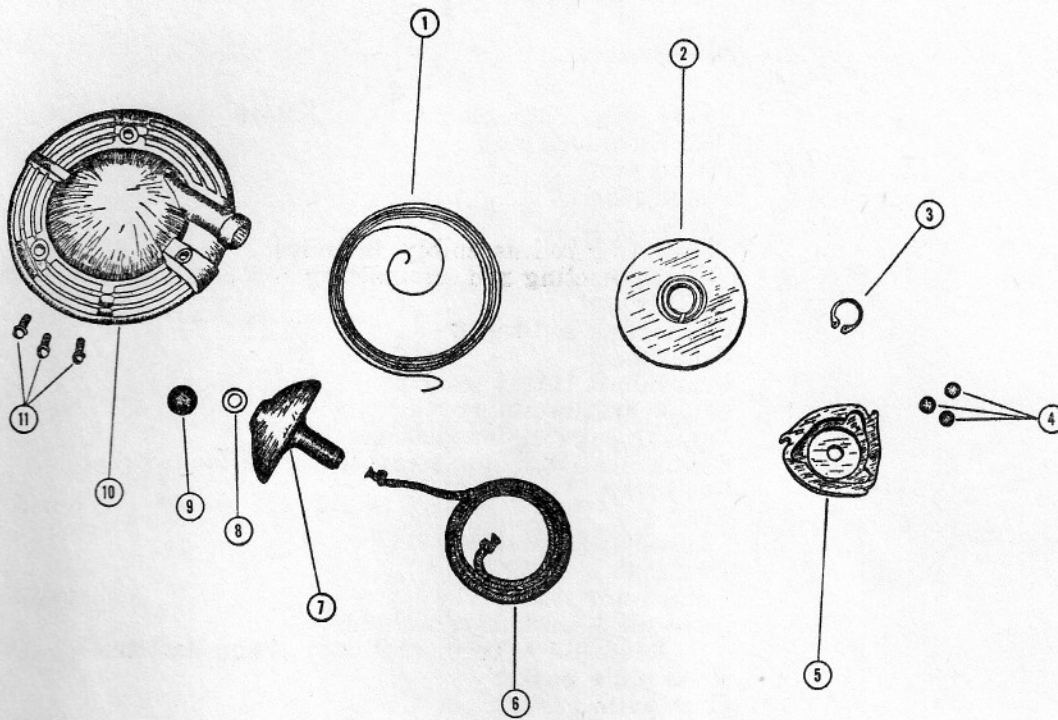
Illus- tration No.	Part No.	Description	Quantity Required
1	211970	Starter recoil spring	1
2	211239	Starter pulley	1
3	28410	Retaining ring	1
4	211646	Starter engaging ball	3
5	211456	Starter clutch	1
6	211232	Starter rope	1
7	211132-1	Starter rope handle	1
8	5/32 I.D. x 5/8 O.D. x .036	Plain washer	1
9	211332-1	Starter handle plug	1
10	211332-1	Starter cover	1
11	1/4-20 x 5/8"	Pan head screw w/internal tooth lockwasher	3
12	A211408	Starter assy. complete, includes all items 1 through 11	

Gasoline Tank and Support Plate

Illus- tration No.	Part No.	Description	Quantity Required
1	2256	Fuel tank vent screw	1
2	257	Fuel tank vent screw gasket	1
3	2251-1	Fuel tank filler cap	1
4	2252-2	Fuel tank filler cap gasket	1
5	2389	Fuel tank vent screw spring	1
6	2388	Fuel tank filler cap disc	1
7	2249	Fuel tank filler cap anchor chain	1
8	2249 1/2	Fuel tank filler cap anchor	1
	A2251-1	Fuel tank filler cap assembly, Includes all items illustration No. 1 through 8 inclusive	
9	28762	Cooling air gasket	1
10	10-24 x 9/16"	Fillister head machine screw	6
11	28146	Crankshaft seal, upper	1
12	1/4-20 x 5/8"	Fillister head machine screw w/spring lockwasher	4
13	28038	Support plate	1
14	28489-1	Shut-off needle valve	1
15	18550	Shut-off valve knob w/screw	1
16	8-32 x 1/4"	Cone point headless slotted set screw	1
17	28254	Fuel line	1
18	28768-1	Fuel line connector	1
19	*A211034-1	Fuel tank assembly, includes: Fuel tank, decal, grommet	1
20	212913	Fuel tank grommet	1
	211391-2	Speed range decal (Not shown)	1
	231530	Decal numeral (Not shown)	1

*For replacement, give model number and specify color.

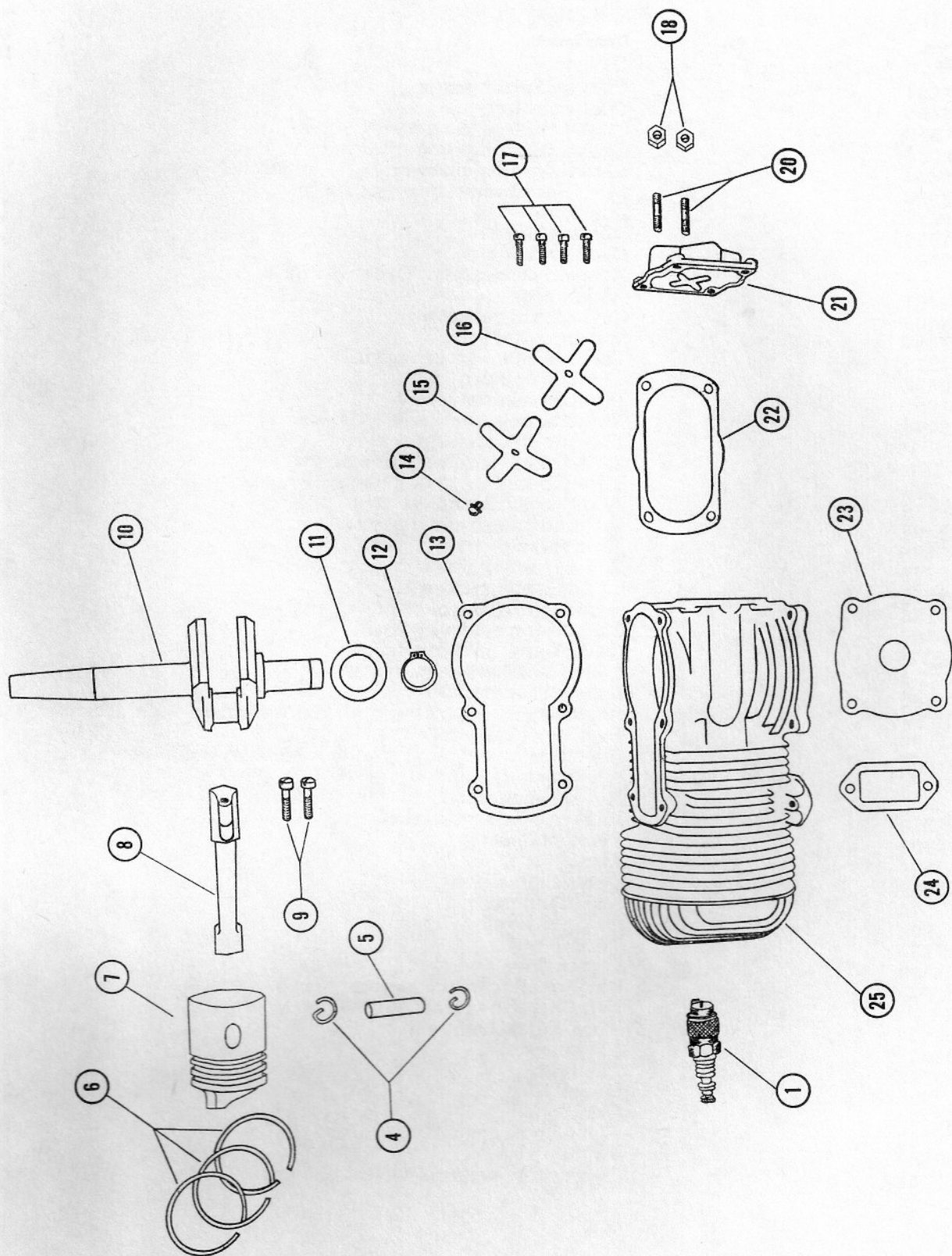
Order by Part Number and Name, giving Motor, Model and Serial Number



Order by Part Number and Name, giving Motor, Model and Serial Number

Power Head

Illus- tration No.	Part No.	Description	Quantity Required
1		Spark plug, Champion J11J, AC M-46	1
4	96-2	Piston pin lock ring	2
5	21017	Piston pin	1
6	25260	Piston ring	3
7	27015	Piston	1
8	A21016-1	Connecting rod assembly, includes: Connecting rod, connecting rod cap, connecting rod screws	1
9	27634	Connecting rod screw	2
10	28018-2	Crankshaft	1
11	28402	Crankshaft thrust washer	1
12	28410	Crankshaft retaining ring	1
13	27277	Bearing cage upper gasket	1
14	6-32x1/4"	Round head machine screw w/spring lockwasher	1
15	27161	Reed stop	1
16	27160	Reed	1
17	10-24 x 3/4"	Fillister head machine screw	4
18	1/4-20	Hex nut	2
20	19209-1	Carburetor stud	2
21	A28158	Reed plate assembly, includes: Reed plate, reed, reed stop, Sems fastener	1
22	27159-1	Reed plate gasket	1
23	28009	Crankcase gasket	1
24	28279	Cylinder exhaust gasket	1
25	A28010-1	Cylinder with sleeve and lower bearing	1
	KG 20	Gasket kit (Not shown)	1
	KD 231	Decal set (Not shown)	1

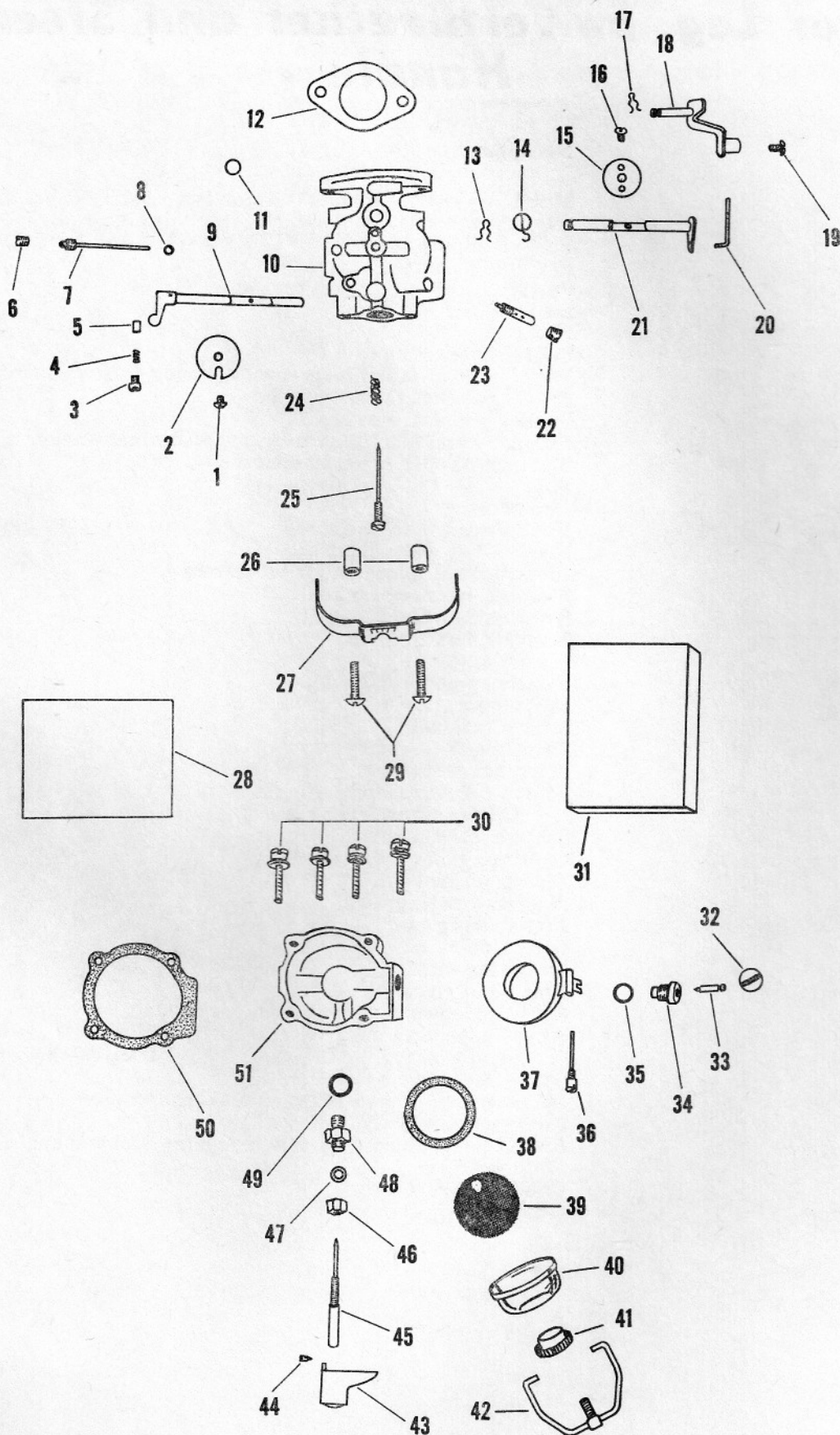


Order by Part Number and Name, giving Motor, Model and Serial Number

Carburetor

Illus- tration No.	Part No.	Description	Quantity Required
1	05204	Choke shutter screw	1
2	08406	Choke shutter	1
3	*07912	Choke friction plug screw	1
4	*03860	Choke friction plunger spring	1
5	*05454	Choke friction plunger	1
6	*02983	Idle tube channel plug screw	1
7	*09537	Idle tube	1
8	07900	Idle tube gasket	1
9	09544	Choke shaft and lever	1
10		Not sold separately. Order MD59A	
11	*02531	Welch plug	1
12	18906	Carburetor gasket	1
13	*08597	Spring cotter	1
14	*07910	Throttle shaft return spring	1
15	09538	Throttle shutter	1
16	*0120	Throttle shutter screw	1
17	18194	Throttle bellcrank shaft retainer spring	1
18	A18190	Throttle bellcrank assembly	1
19	6-32 x 1/4"	Slotted hex head machine screw	1
20	18193	Throttle link	1
21	08839	Throttle shaft and lever	1
22	02395	Main nozzle channel screw	1
23	*08586	Main nozzle	1
24	*05725	Idle adjusting screw spring	1
25	*09540	Idle adjusting screw	1
26	18186	Carburetor control panel spacer	2
27	28181	Carburetor control panel	1
28	*GS115	Gasket and packing set	1
29	8-32 x 3/4"	Round head machine screw	2
30	06062	Body retaining screw	4
31	RK273	Repair parts kit includes all items marked with asterisk*	1
32	07896	Fuel bowl plug screw	1
33	*07895	Inlet needle, seat and gasket assembly, includes: Items 2, 3 and 4	1
34		Not sold separately. Order 07895	
35	02510	Inlet needle seat gasket	1
36	*07901	Float pinion pin	1
37	07804	Float	1
38	08227	Strainer gasket	1
39	*08574	Strainer screen	1
40	08902	Strainer bowl	1
41	07765	Thumb nut	1
42	08898	Clamp wire and stud	1
43	A18548	Carburetor control knob w/screw	1
44	8-32 x 1/4"	Cone point headless slotted set screw	1
45	*09535	Main adjustment screw	1
46	0703	Packing nut	1
47	09112	Packing	1
48	0702	Gland	1
49	0676	Gasket	1
50	07903	Float bowl gasket	1
51	08500	Fuel bowl	1
	MD59A	Carburetor assembly (Not shown)	1

Order by Part Number and Name, giving Motor, Model and Serial Number

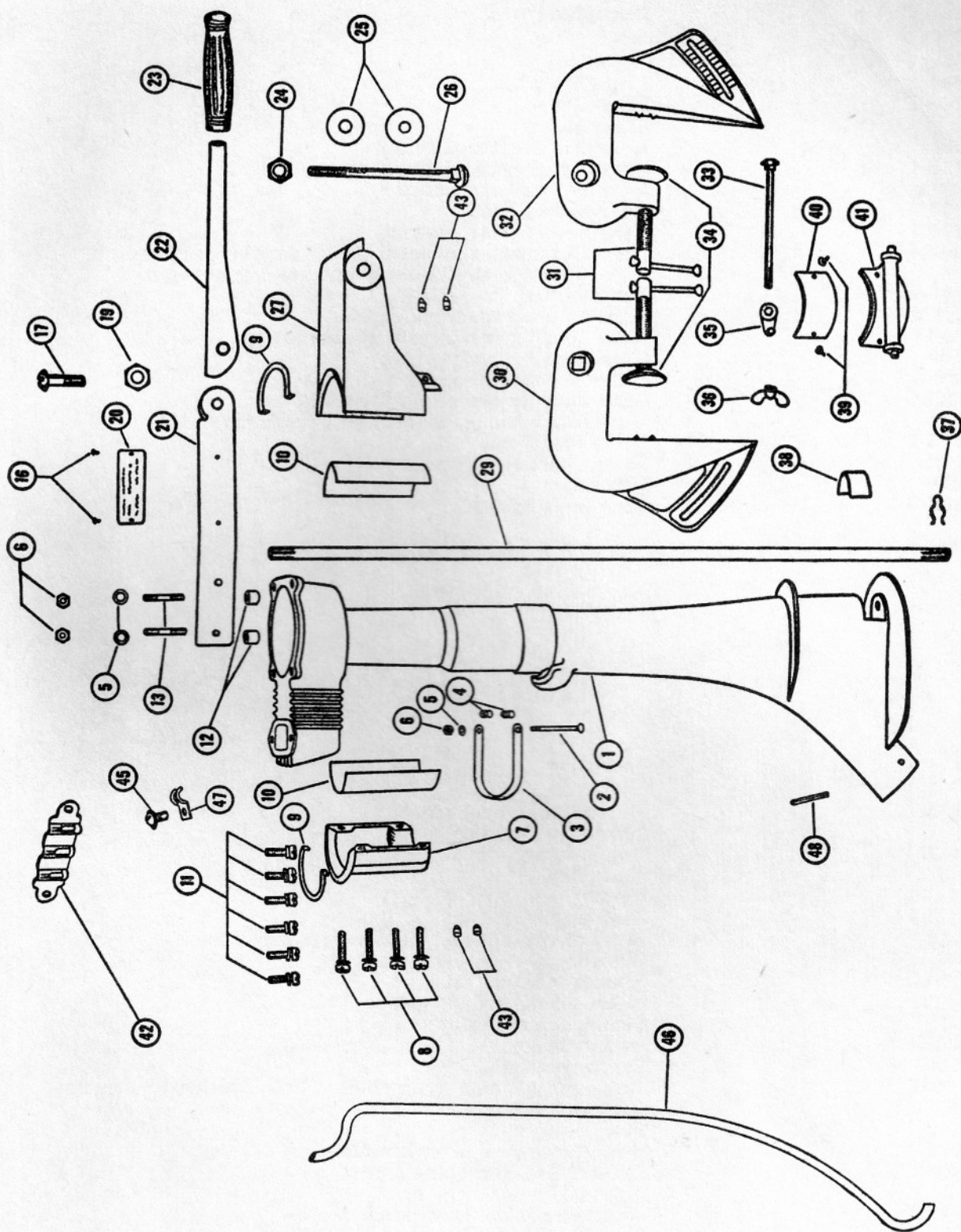


Order by Part Number and Name, giving Motor, Model and Serial Number

Motor Leg, Swivel Bracket and Steering Handle

Illus- tration No.	Part No.	Description	Quantity Required
1	A28133-3	Motor leg assy., includes: Motor leg, cooling tube, clamp, screw and groove pin	1
2	28632	Friction clamp bolt	1
3	28573	Friction clamp	1
4	28300	Spring	2
5	1/4"	Lockwasher	1
6	1/4-20	Hex nut	3
7	28572	Swivel bracket cap	1
8	1/4-20 x 1"	Fillister head machine screw w/spring lockwasher	4
9	28011	Swivel bracket thrust washer	2
10	28169	Swivel bracket bearing	2
11	1/4-20 x 3/4"	Fillister head machine screw w/spring lockwasher	6
12	25281	Steering handle bracket spacer	2
13	28004	Stud	2
16	2 x 3/16"	Drive screw	2
17	5/16-18 x 1"	Round head machine screw	1
19	5/16-18	Elastic stop nut	1
20	A16395-1	Identification plate w/Drive screws	1
21	23078	Steering handle bracket	1
22	211079	Steering handle	1
23	211137-1	Steering handle grip	1
24	3/8-16	Elastic stop nut	1
25	28286	Friction washer	2
26	3/8-16 x 5"	Carriage bolt	1
27	28072	Swivel bracket	1
29	28128	Drive shaft	1
30	A28032	Stern bracket, right	1
31	A28073	Clamp screw assembly, includes: Clamp screw, cotter pin	2
32	28532	Stern bracket, left	1
33	1/4-20 x 4 1/4"	Carriage bolt	1
34	24074	Clamp screw foot	2
35	28654	Angle adjusting stop	1
36	1/4-20	Elastic wing nut	1
37	19173	Lock ring	1
38	125536-1	Motor leg clip	1
39	1/8 x 3/8"	Flat head rivet	2
40	A28631	Swivel friction shoe w/rivets	1
41	A28630	Angle adjusting support assembly, includes: Angle adjusting support, swivel friction shoe, rivets	1
42	25580	Spare shear pin holder	1
43	202558	Staking pin for swivel bracket thrust washer	4
44	19394-1	Fuel ratio decal (Not shown)	
45	10-24 x 5/16"	Round head machine screw w/spring lockwasher	1
46	211660-1	Cooling tube	1
47	211649	Cooling tube clamp	1
48	3/32 x 7/8"	Groove pin	1

Order by Part Number and Name, giving Motor, Model and Serial Number



Order by Part Number and Name, giving Motor, Model and Serial Number

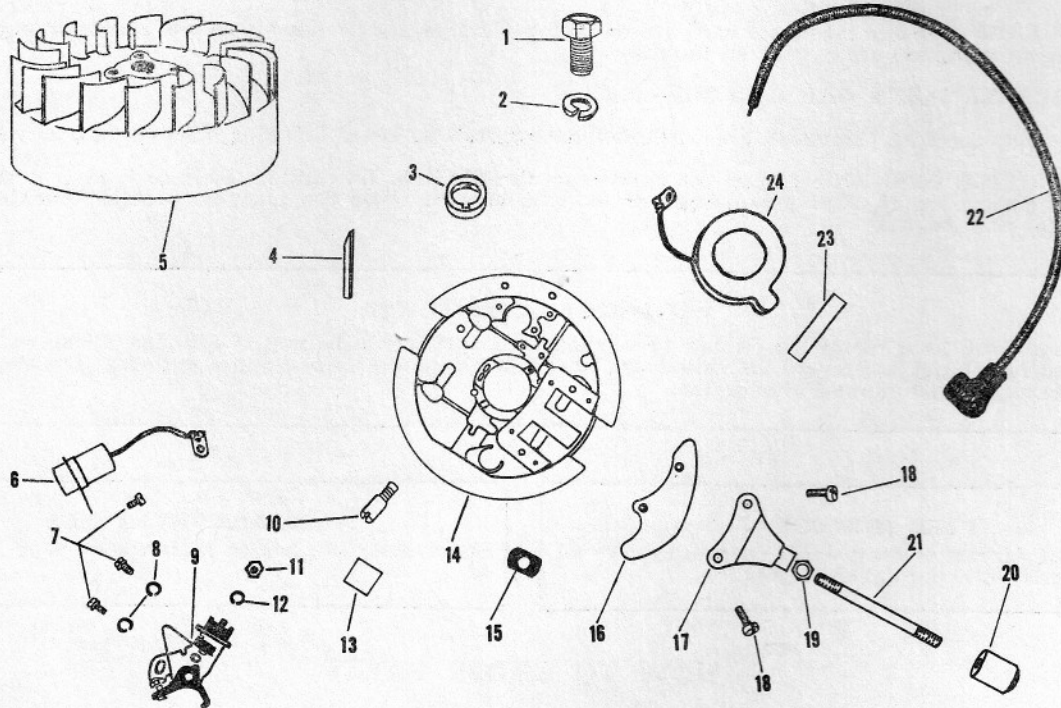
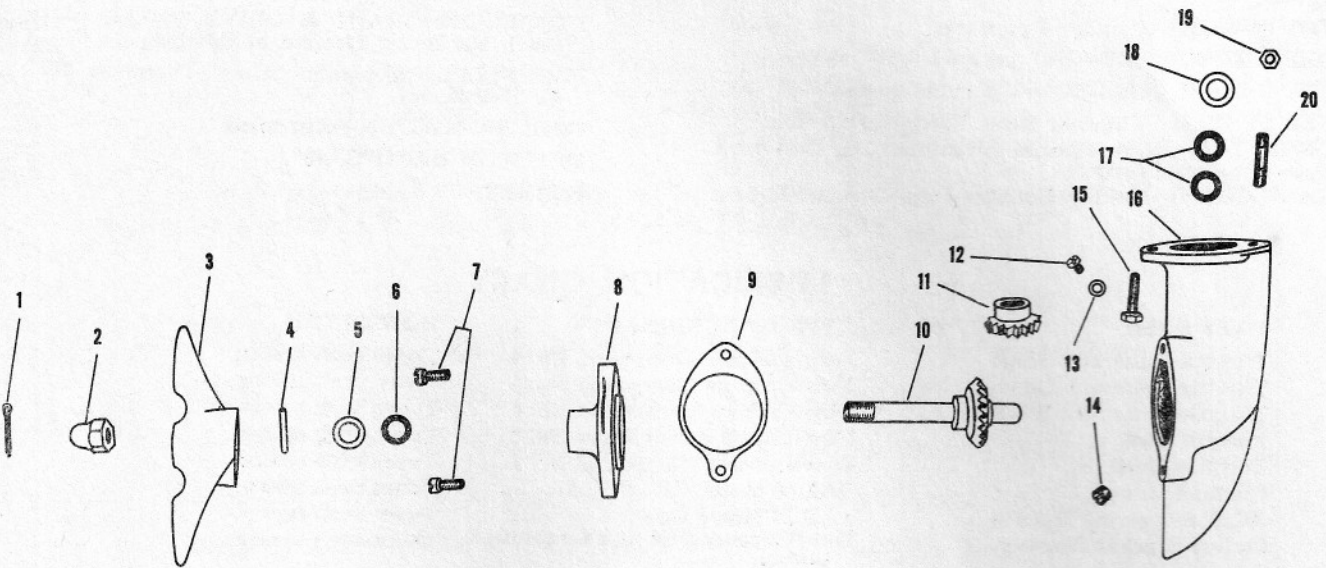
Gear Housing and Propeller

Illustration No.	Part No.	Description	Quantity Required
1	3/32 x 1"	Cotter pin	1
2	19094	Propeller nut	1
3	28265-1	Propeller	1
4	101	Shear pin	1
4	28296	Propeller shaft seal retainer	1
6	19118-1	Propeller shaft seal	1
7	1/4-20 x 5/8"	Fillister head cap screw	2
8	19055	Gear housing cap	1
9	19123	Gear housing cap gasket	1
10	A28098-1	Propeller shaft and bevel gear assembly, includes: Propeller shaft, bevel gear and groov pin	1
11	23266-2	Bevel pinion	1
12	10-24 x 1/4"	Fillister head machine screw	1
13	19556	Gear housing vent screw washer	1
14	19109	Gear housing plug	1
15	1/4-20 x 1"	Hex head machine screw	1
16	A28054	Gear housing assembly, includes: Gear housing, vent screw, grease plug	1
17	18118-1	Drive shaft seal	2
18	19272	Drive shaft seal retainer	1
19	1/4-20	Hex nut	1
20	28008	Gear housing stud	1

Magneto

Illustration No.	Part No.	Description	Quantity Required
1	211552	Magneto flywheel screw	1
2	5/16"	Spring lockwasher	1
3	11448	Breaker cam	1
4	11453	Shaft key	1
5	Y11469	Rotor	1
6	X11397	Condenser	1
7	11439	Breaker contact and condenser clamp screw	3
8	2965	Washer	2
9	X11462	Breaker contact set	1
10	X3428	Friction shoe group	1
11	11015	Connection stud nut	1
12	M-90X	Lockwasher	1
13	11559	Cam wiper felt	1
14	X11467	Stator plate assembly, includes: Coil, condenser, screws	1
15	5486	Lead wire grommet	1
16	28192	Throttle cam	1
17	28574	Magneto control lever bracket	1
18	12-24 x 3/4"	Fillister head machine screw	2
19	1/4-20	Hex nut	1
20	28549	Magneto control lever knob	1
21	28081	Magneto control lever	1
22	X11576	Lead wire group	1
23	11409	Coil wedge spring	1
24	X11406	Coil	1
	FW2514	Magneto complete (Not shown)	1

Order by Part Number and Name, giving Motor, Model and Serial Number



Specifications

HORSEPOWER—2 O.B.C. Certified Brake H.P. at 4000 R.P.M.

MOTOR—Single Cylinder 2-port type.

BORE AND STROKE—1 $\frac{3}{4}$ " bore x 1-9/16" stroke.

PISTON DISPLACEMENT—3.76 cubic inches.

FUEL SYSTEM—Tillotson Float Feed, Carburetor.

CONNECTING ROD—Special Aluminum Die Cast with cast-in bronze bearings.

CRANKSHAFT—Molded Nodular Iron, Ground Finish.

GASOLINE TANK—Pressed Aluminum Tank. Cap. 5 pints.

PROPELLER SHAFT & DRIVE SHAFT — Stainless Steel, Hardened, Ground and Polished.

PROPELLER—Aluminum Alloy. Diameter 6 $\frac{1}{2}$ ", Pitch 4". Left Hand.

COOLING SYSTEM—Aircooled.

TRANSOM HEIGHT—15".

WEIGHT—29 pounds.

LUBRICATION CHART

PART NAME	TYPE OF LUBRICANT	HOW OFTEN
Throttle Bellcrank Shaft	Dow-Corning Compound No. 4	Twice each season
Throttle Bellcrank Swivel	Dow-Corning Compound No. 4	Twice each season
Throttle Bellcrank Washer	Dow-Corning Compound No. 4	Twice each season
Throttle Link	Dow-Corning Compound No. 4	Twice each season
Throttle Shaft	Dow-Corning Compound No. 4	Twice each season
Clamp Screws	SAE 30 Motor Oil	Twice each season
Joint in Steering Handle	SAE 30 Motor Oil	Twice each season
Swivel Bracket Bearing	Dow-Corning DC4 or a Graphite Grease	Twice each season
Contact surface between magneto stator plate and upper bearing cage	Lubriplate or cup grease	If magneto control lever becomes hard to move
Starter Spring, Cover Hub and Pulley Bearing	Lubriplate or light cup grease	If starter rewind becomes sluggish
Gear Housing	Underwater grease	Every 30 hours, oftener if required

SPECIAL ADJUSTMENTS

STEERING TENSION—If motor steers too hard, loosen the $\frac{1}{4}$ -20 nut on the friction clamp bolt shown on page 9, illustration number 6. If motor turns too easily, tighten the nut.

MAGNETO BREAKER POINT GAP SPACING—.020".

SPARK PLUG—Replace with Champion J11J, AC M-46 or equivalent. Set spark plug electrode gap at .050 inches.

POINT OF THROTTLE OPENING—Adjust the carburetor throttle link, Illustration 20, Page 6, so that the throttle bellcrank assembly, Illustration 18, Page 6, will begin to move downward when the magneto control lever is approximately 1 $\frac{3}{4}$ " left of center position.

IF MOTOR LOSES POWER

Remove power head from motor leg. Rotate crankshaft until piston is at bottom of cylinder. Clean carbon from exhaust ports using a blunt instrument. Remove spark plug and blow loose carbon out of cylinder. Use new gasket and retighten screws after 30 minutes of operation.

FUEL MIXTURE

Use $\frac{1}{2}$ pint of Allstate or comparable outboard motor oil SAE number 30 or 40 per gallon of gasoline.

SPARE SHEAR PINS

Spare shear pin holder is shown on page 9, illustration 42.

HOW TO ORDER PARTS

All items listed in this Parts booklet may be ordered through any Sears retail or mail order store. Parts are also available from any authorized Elgin service dealer or distributor. In ordering parts by mail, selling prices will be furnished on request or parts will be shipped at prevailing prices and you will be billed accordingly.

WHEN ORDERING ALWAYS GIVE THE FOLLOWING INFORMATION:

1. The Part Number and Description.
2. Both the Model Number and Serial Number shown on the Identification Plate located on the Steering Handle Bracket.