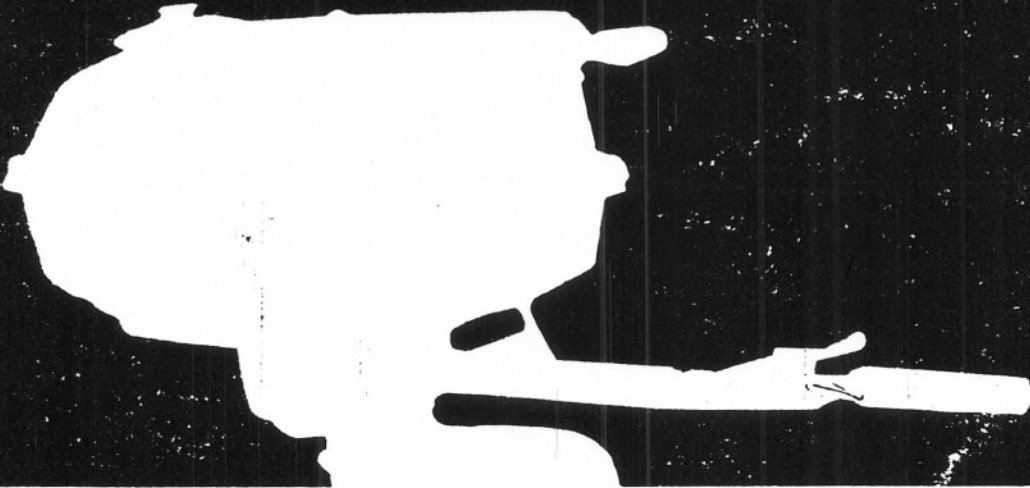


# YAMAHA

## P-35



### OUTBOARD MOTOR PARTS LIST

4412  
44  
284

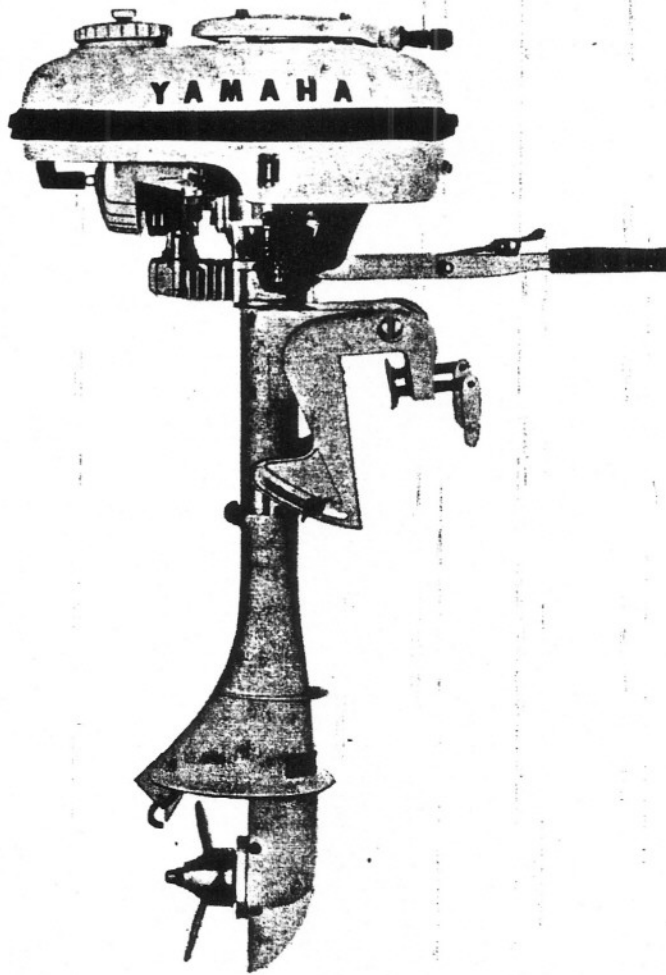
17.00  
1.1988  
500192  
511700  
1145940  
114  
1057  
1057  
1057  
170  
170  
180  
87  
74070  
74  
8177  
11  
1180  
108  
775  
97  
1680  
108  
108  
108

10.60  
100

1680  
108  
108

# **YAMAHA OUTBOARD MOTOR**

## **MODEL P35**



# Instructions on Parts List

## Yamaha P35

All information as referred to in this Parts List is related to components or parts of the Yamaha P35 outboard Motor.

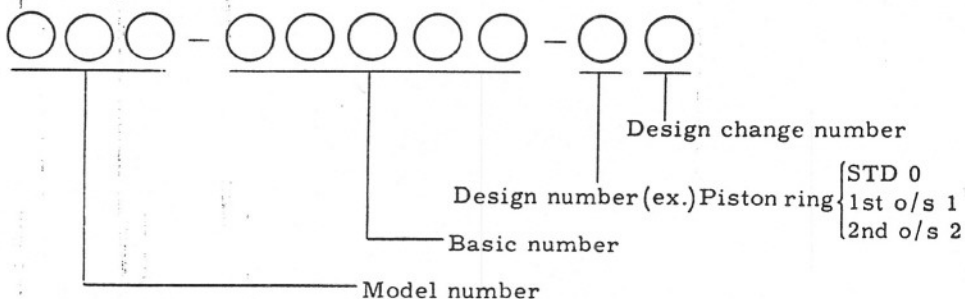
### 1. Part Numbers

This Parts List has been prepared on the basis of the revised part numbers. If required, refer to the Remarks in each page in which a comparative list of the former and the new part numbers is shown. Composition of Part Number:

Parts made to the P35 are largely separated into two groups; that is, ordinary and standard parts.

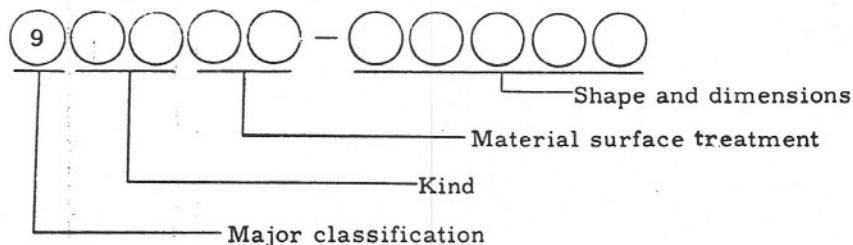
#### 1-1. Standard Parts

The standard parts for the P35 are coded numerically in three-figure-blocks commencing with the model number. The second figure-block refers to the basic number, the first number of the third block to the design number, and the second of the same block to the design change number. An example is shown below:



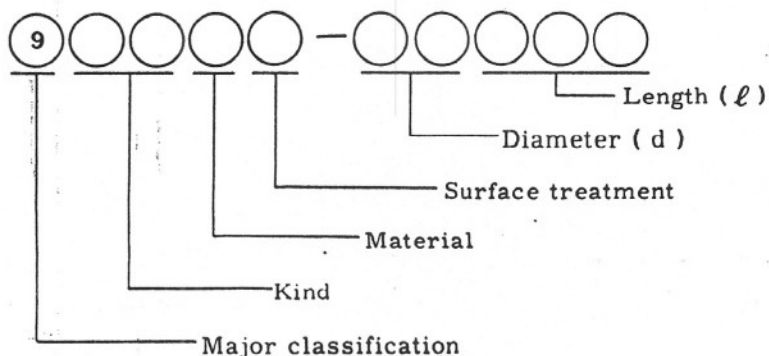
#### 1-2. Interchangeable Parts

Interchangeable parts for the P35 are designated by two five-figure numbers, separated by a hyphen. The first number is always code in numeral 9, indicating the major classification. The second two numbers refer to the kind of the part, and the third two numbers to the material surface treatment given to the part. The second figure block refers to the shape and dimensions of the part. Given below is an example of a part number of the standard.



#### 1-2-1. Bolts, Pins and Screws

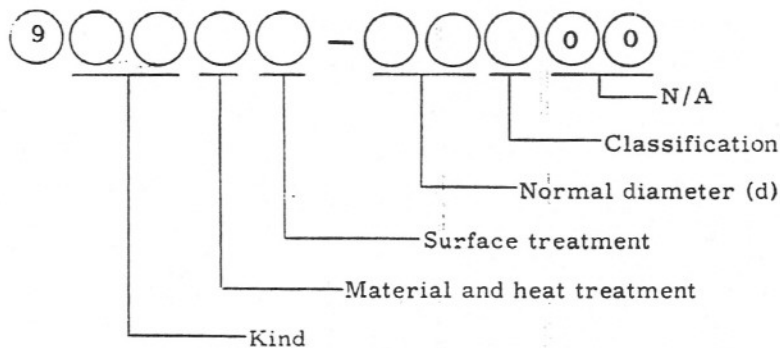
Bolts, pins and screws are coded numerically in two five-figure-blocks, separated by a hyphen.



Kind	Part	Shape	Kind	Part	Shape
11	Bolt		21	Screw, oval-head	
12	Bolt		22	Screw, flat-head	
13	Bolt		23	Screw, cylinder head	
14	Pin, cotter		24	Screw, crown head	
15	Pin, crevice		25	Screw, pan-head	
16	Pin, spring		26	Screw, oval-head	
18	Pin, dowel		27	Screw, flat-head	

### 1-2-2. Nuts and Washers

Nuts and washers are designated by two five-figure-blocks, separated by a hyphen.



Kind	Class.	Part	Shape	Kind	Class.	Part	Shape
28	1	Nut		29	1	Washer	
28	2	Nut		29	2	Washer	
28	3	Nut		29	3	Washer toothed	
28	5	Nut, slotted		29	4	Washer toothed	
28	7	Nut, crown					

1-2-3. Others

Others	Part Number										
Oil Seal	9	3	1	○	○	-	○	○	○	○	○
O Ring	9	3	2	○	○	-	○	○	○	○	○
Bearing	9	3	3	○	○	-	○	○	○	○	○
Circlip	9	3	4	○	○	-	○	○	○	○	○
Ball	9	3	5	○	○	-	○	○	○	○	○
Pin, dowel B	9	3	6	○	○	-	○	○	○	○	○
Nipple, grease	9	3	7	○	○	-	○	○	○	○	○
Tire	9	4	1	○	○	-	○	○	○	○	○
Tube	9	4	2	○	○	-	○	○	○	○	○
Band, rim	9	4	3	○	○	-	○	○	○	○	○
Rim	9	4	4	○	○	-	○	○	○	○	○
Chain	9	4	5	○	○	-	○	○	○	○	○
Joint, chain	9	4	6	○	○	-	○	○	○	○	○
Plug	9	4	7	○	○	-	○	○	○	○	○

2. Dimensions

The dimensions of parts are indicated in millimeters, except balls whose dimensions are shown in inches.

3. Symbols

The following symbols are employed in this Parts List.

- S .....S-shaped circlip
- E .....E-shaped circlip
- R .....R-shaped circlip
- T .....Number of gear teeth
- V .....Voltage as specified for bulbs
- W .....Wattage as specified for bulbs
- L .....Length
- S .....S-type oil seal
- SD .....SD-type oil seal

4. Assembly Parts (Assembly Units)

In this parts list, a dot (.) is put against the name of each component part of assembly units so that the name of the part is indented by one letter.

(ex.)

Part	Q'ty	Remarks
Carburetor ass'y (left)	1	
Carburetor ass'y (right)	1	
• Chamber, mixing	2	
• Gasket, float chamber	2	
• Jet, Pilot	2	
• Nozzle, main	2	
— —	—	
— —	—	
— —	—	
• Lever, starter (left)	1	For left only
• Lever, starter (right)	1	For right only

5. Notice on Modification of Parts

In the event of the modification of parts, it will be announced in YAMAHA PARTS NEWS.

Be sure to make revisions on the Parts List on your hand according to the announcement.

6. Publishing Date of Parts List

This Parts List is edited in MARCH, 1968.

CONTENTS

Fig. 1 Engine..... 8

Fig. 2 Casing.....10

Fig. 3 Drive system.....12

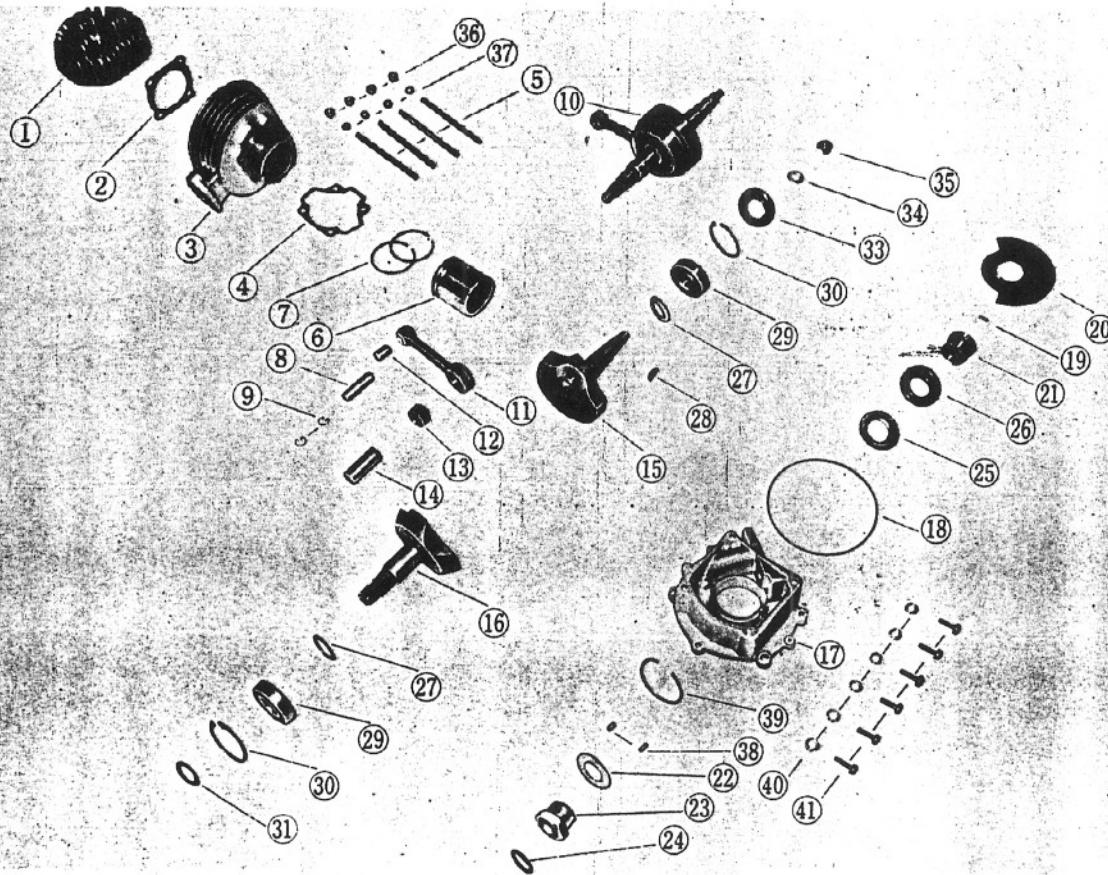
Fig. 4 Crankcase & Starter.....14

Fig. 5 Tank & Handle.....16

Fig. 6 Carburetor & Air cleaner.....18

Fig. 7 Magneto & Tools.....20

# 1. Engine



Ref. No.	Parts No.	Part Name	Q'ty	Description	S · R	Remarks
1.....	603-11111-00.....	HEAD, cylinder .....	1.....			
2.....	603-11181-00.....	GASKET, cylinder head .....	1.....			
3.....	603-11311-01.....	CYLINDER.....	1.....			
4.....	603-11351-00.....	GASKET, cylinder .....	1.....			
5.....	603-11361-00.....	BOLT, cylinder holding .....	4.....			
6.....	603-11361-02.....	PISTON .....	1.....			
7.....	603-11601-01.....	PISTON RING SET .....	1.....			
8.....	603-11633-01.....	PIN, piston.....	1.....			
9.....	132-11634-00.....	CLIP, piston pin.....	2.....			
10.....	619-11400-00.....	CRANK ASS'Y .....	1.....			
11.....	102-11651-01.....	· ROD, connecting .....	1.....			
12.....	102-11653-01.....	· BUSH, connecting rod .....	1.....			
13.....	93310-41608 .....	· BEARING .....	1.....			
14.....	101-11681-00.....	· PIN, crank.....	1.....			
15.....	603-11412-01.....	· CRANK 1.....	1.....			
16.....	619-11422-00.....	· CRANK 2.....	1.....			
17.....	603-13551-00.....	COVER, valve.....	1.....			
18.....	93211-00062 .....	O RING .....	1.....			
19.....	93603-12007 .....	PIN, dowel B .....	1.....			
20.....	603-13512-01.....	VALVE .....	1.....			
21.....	603-13515-02.....	COLLAR, valve .....	1.....			
22.....	603-11587-00.....	WASHER, lock .....	1.....			



Ref. No.	Parts No.	Part Name	Q'ty	Description	S · R	Remarks
23	603-11555-02	NUT, crank shaft	1			
24	93210-19026	O RING	1	2.4-19.4		
25	603-15185-00	PROTECTOR, oil seal	1			
26	93101-25035	OIL SEAL	1	S25-40-8		
27	603-11561-00	SHIM, crank	2			
28	146-11545-00	KEY, woodruff	1			
29	93306-00402	BEARING	2	6004C3		
30	93420-42007	CIRCLIP	2			
31	93210-18024	O RING	1	1.2-20		
33	93'01-20023	OIL SEAL	1	S20-42-6		
34	92990-10100	WASHER, spring	1			
35	92890-10100	NUT	1			
36	92890-06700	NUT, crown	4			
37	92990-06200	WASHER, plain	4			
38	93604-10011	PIN, dowel B	2	4-10		
39	93420-40006	CIRCLIP	1			
40	92990-06100	WASHER, spring	6			
41	92590-06020	SCREW, pan head	6			

M E M O

---

---

---

---

---

---

---

---

---

---

---

---

---

---

---

---

---

---

---

---

---

---

---

---

---

---

---

---

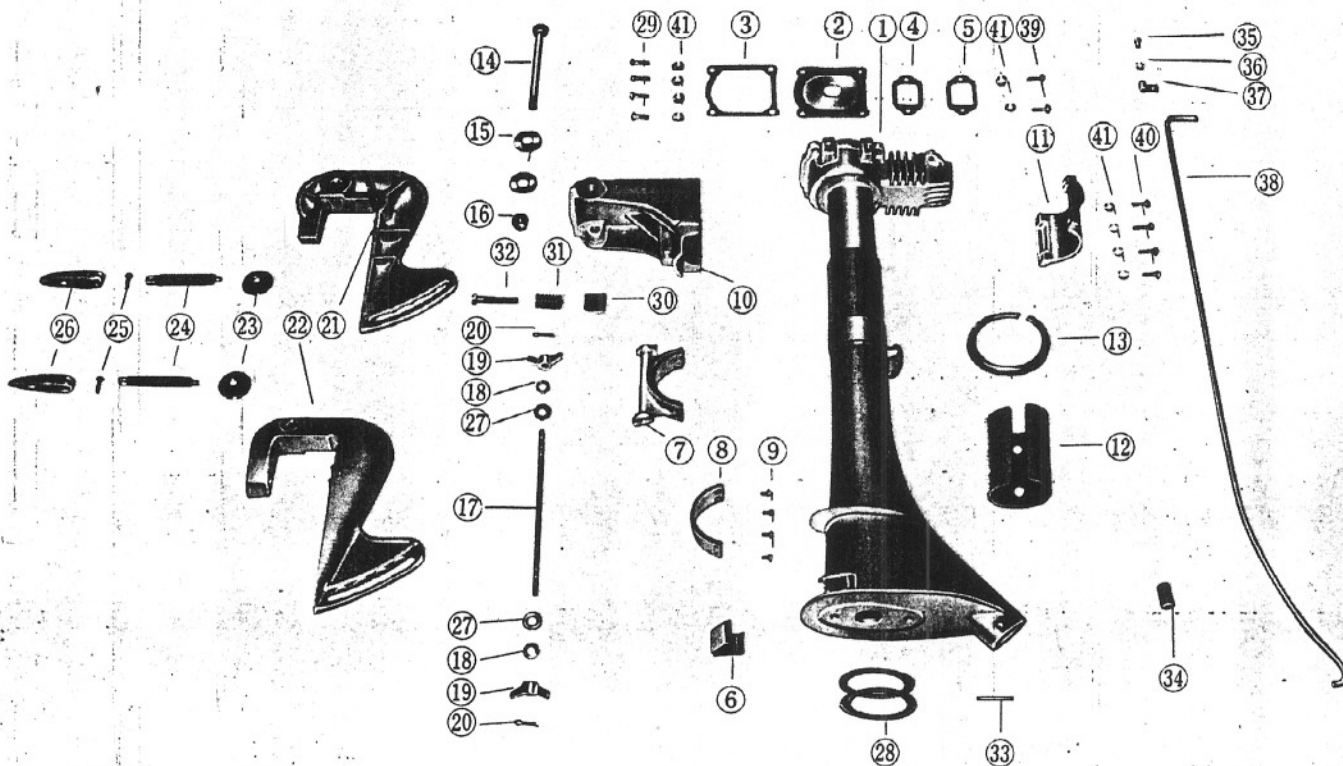
---

---

---

---

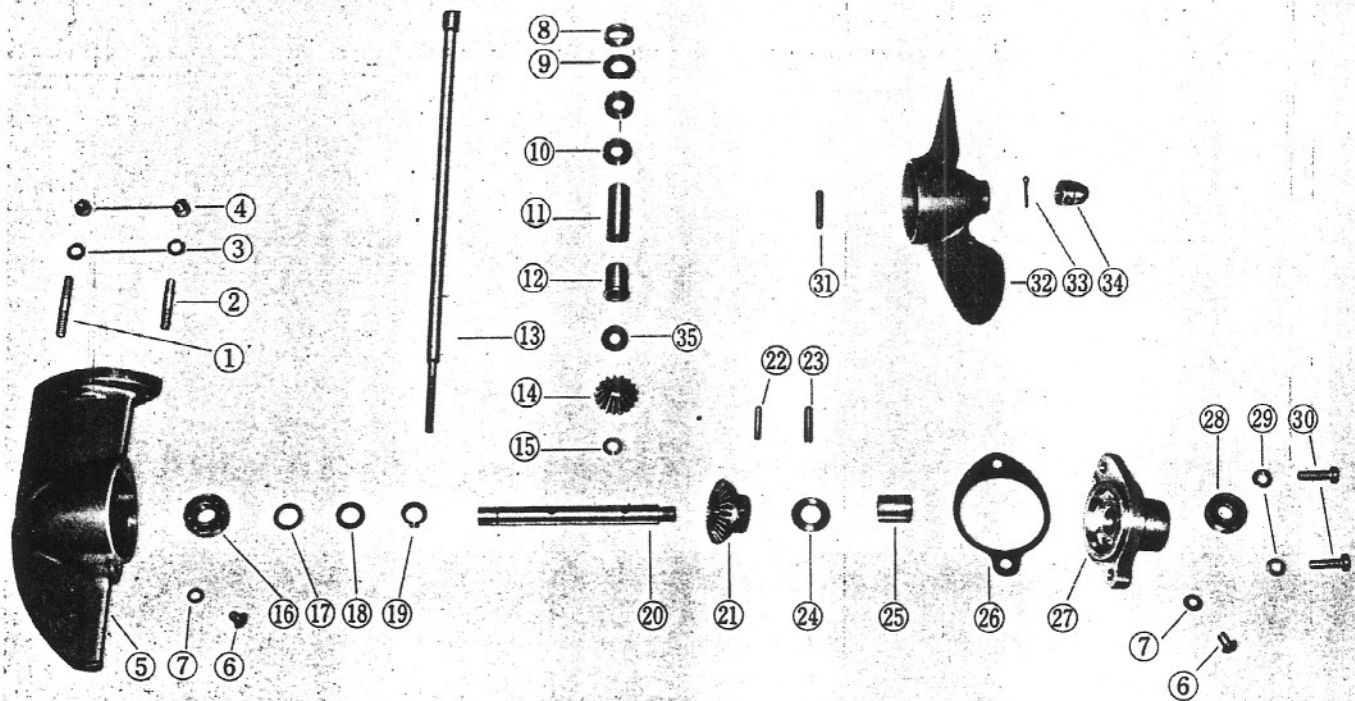
## 2. Casing



Ref. No.	Parts No.	Part Name	Q'ty	Description	S	R	Remarks
1.....	603-45111-02.....	CASING, upper	1.....				
2.....	603-45113-01.....	GASKET, upper casing 1	1.....				
3.....	603-45114-00.....	GASKET, upper casing 2	1.....				
4.....	603-41133-00.....	GASKET, exhaust manifold 1	1.....				
5.....	603-41134-00.....	GASKET, exhaust manifold 2	1.....				
6.....	603-45151-00.....	COVER, upper casing	1.....				
7.....	619-43350-00.....	THRUST RECEIVER ASS'Y.....	1.....				
8.....	619-43353-00.....	METAL, thrust receiver.....	1.....				
9.....	619-43375-00.....	RIVET	4.....				
10.....	619-43311-01.....	BRACKET, swivel 1.....	1.....				
11.....	619-43312-01.....	BRACKET, swivel 2.....	1.....				
12.....	619-42537-01.....	BUSHING, pivot shaft.....	1.....				
13.....	603-42535-01.....	WASHER, thrust	1.....				
14.....	603-43131-00.....	BOLT, clamp bracket	1.....				
15.....	603-43132-00.....	WASHER, friction.....	2.....				
16.....	603-43138-00.....	NUT	1.....				
17.....	619-43371-00.....	BOLT, receiver	1.....				
18.....	92990-06100	WASHER, spring	2.....				
19.....	603-43372-01.....	NUT	2.....				
20.....	91490-20010	PIN, cotter.....	2.....				
21.....	603-43111-02.....	BRACKET, clamp 1.....	1.....				
22.....	603-43112-01.....	BRACKET, clamp 2.....	1.....				



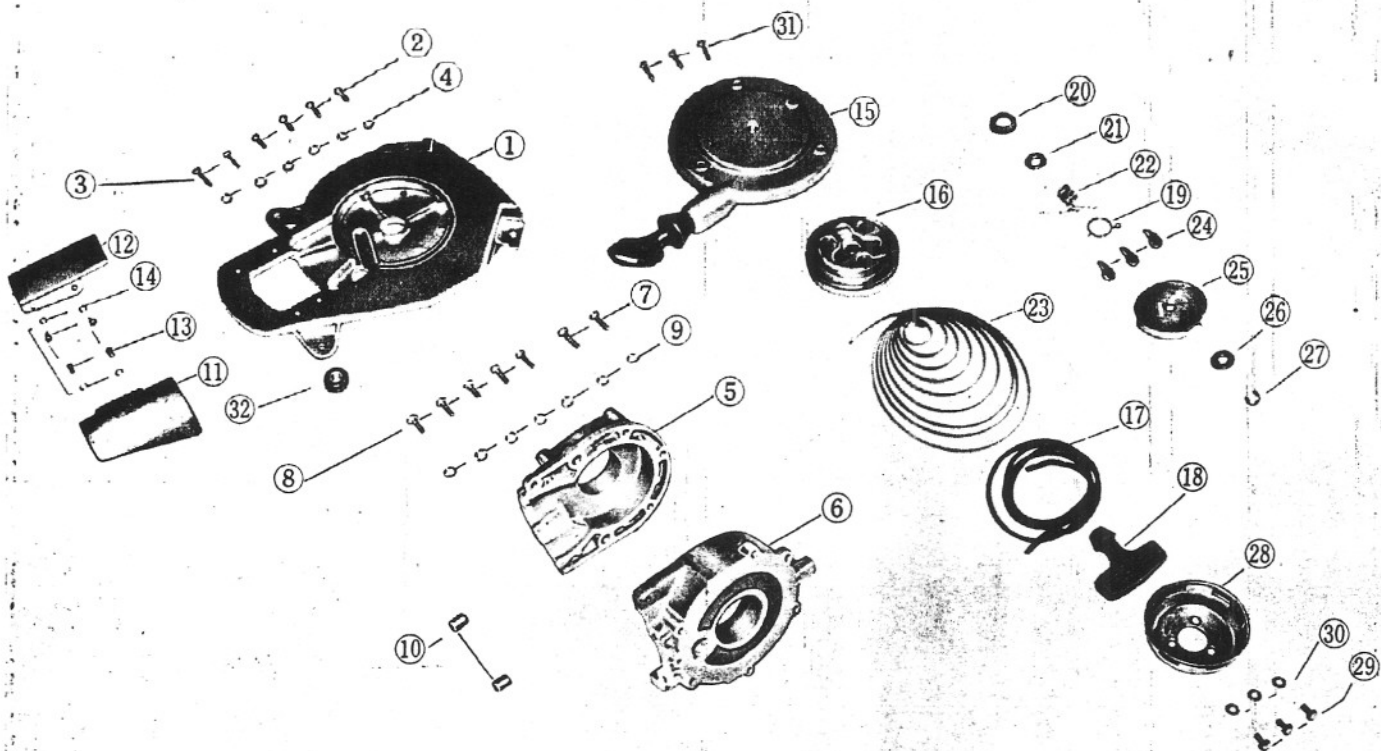
### 3. Drive system



Ref. No.	Parts No.	Part Name	Q'ty	Description	S · R	Remarks
1	603-45382-01	BOLT, STUD 2	1	39 ℓ		
2	603-45381-01	BOLT, STUD	1	32 ℓ		
3	603-45391-00	WASHER, spring	2			
4	603-45384-00	NUT	2			
5	603-45311-01	CASING, lower	1			
6	603-45341-01	PLUG, drain	2			
7	603-45342-00	GASKET, drain plug	2			
8	603-45344-00	COVER, oil seal	1			
9	603-45327-00	COLLAR, knock	1			
10	93101-10029	OIL SEAL	2	S10-20-5		
11	603-45317-00	BUSHING, drive shaft 2	1			
12	603-45316-00	BUSHING, drive shaft 1	1			
13	603-45510-02	DRIVE SHAFT ASS'Y	1			
14	603-45551-01	PINION	1			
15	603-45531-00	CLIP, drive shaft	1			
16	93306-00101	BEARING	1			
17	603-45612-00	THRUST WASHER, propeller shaft 1	1			
18	603-45613-00	THRUST WASHER, propeller shaft 2	1			
19	93410-12003	CIRCLIP	1			
20	619-45611-00	SHAFT, propeller	1			
21	603-45561-01	GEAR	1			
22	91609-50024	PIN, spring	1			



## 4. Crankcase & Starter

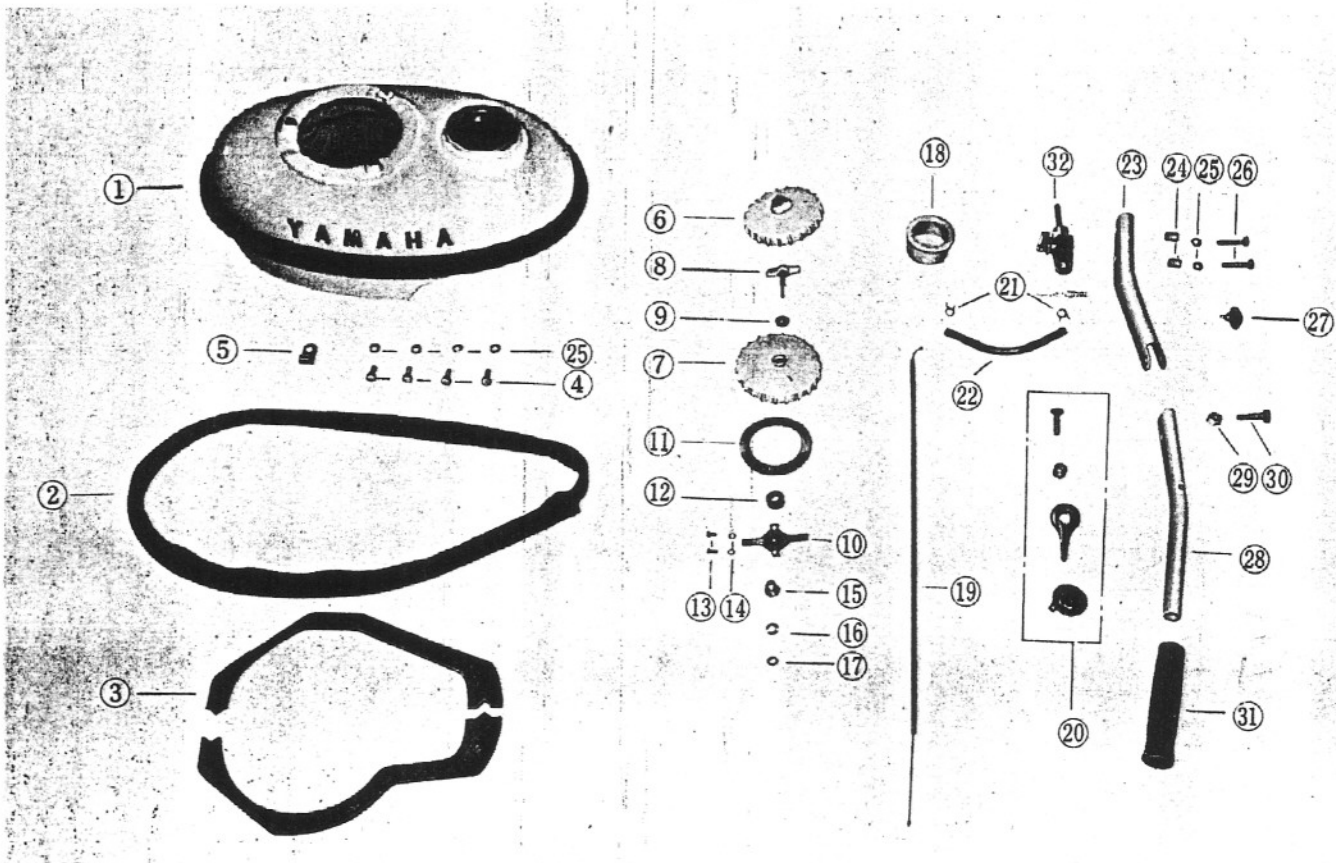


Ref. No.	Parts No.	Part Name	Q'ty	Description	S · R	Remarks
1.....	603-24191-00.....	BRACKET, fuel tank	1.....			
2.....	92590-06020 .....	SCREW, pan head	4.....			
3.....	42590-06015 .....	SCREW, pan head	2.....			
4.....	92990-06100 .....	WASHER, spring	6.....			
5.....	603-15111-00.....	CASE, crank 1	1.....			
6.....	603-15121-00.....	CASE, crank 2	1.....			
7.....	92590-06035 .....	SCREW, pan head	2.....			
8.....	92590-06020 .....	SCREW, pan head	5.....			
9.....	92990-06100 .....	WASHER, spring	7.....			
10.....	91810-03014 .....	PIN, dowel A	2.....	8. 5-10-14		
11.....	603-12631-00.....	DEFLECTOR 1	1.....			
12.....	603-12632-00.....	DEFLECTOR 2	1.....			
13.....	92504-04008 .....	SCREW, pan head	4.....			
14.....	92990-04100 .....	WASHER, spring	4.....			
15.....	619-15710-00.....	STARTER ASS'Y	1.....			
16.....	619-15711-00.....	DRUM, sheave	1.....			
17.....	619-15751-00.....	WIRE, starter	1.....			
18.....	619-15755-00.....	HANDLE, starter	1.....			
19.....	619-15734-00.....	SPRING, return	1.....			
20.....	619-15738-00.....	LUBRICATOR	1.....			
21.....	619-15719-00.....	WASHER, thrust	2.....			
22.....	619-15715-00.....	SPRING, drive plate	1.....			

Ref. No.	Parts No.	Part Name	Q'ty	Description	S · R	Remarks
23	619-15713-00	· SPRING, starter	1			
24	619-15741-00	· PAWL, drive	3			
25	619-15716-00	· PLATE, drive	1			
27	619-15744-00	· CIRCLIP	1			
28	619-15723-00	· PULLEY, starter	1			
29	91290-06010	BOLT	3			
30	92990-06100	WASHER, spring	3			
31	91290-06025	BOLT	3			
32	603-81364-00	GROMMET	1			

M E M O

# 5. Tank & Handle

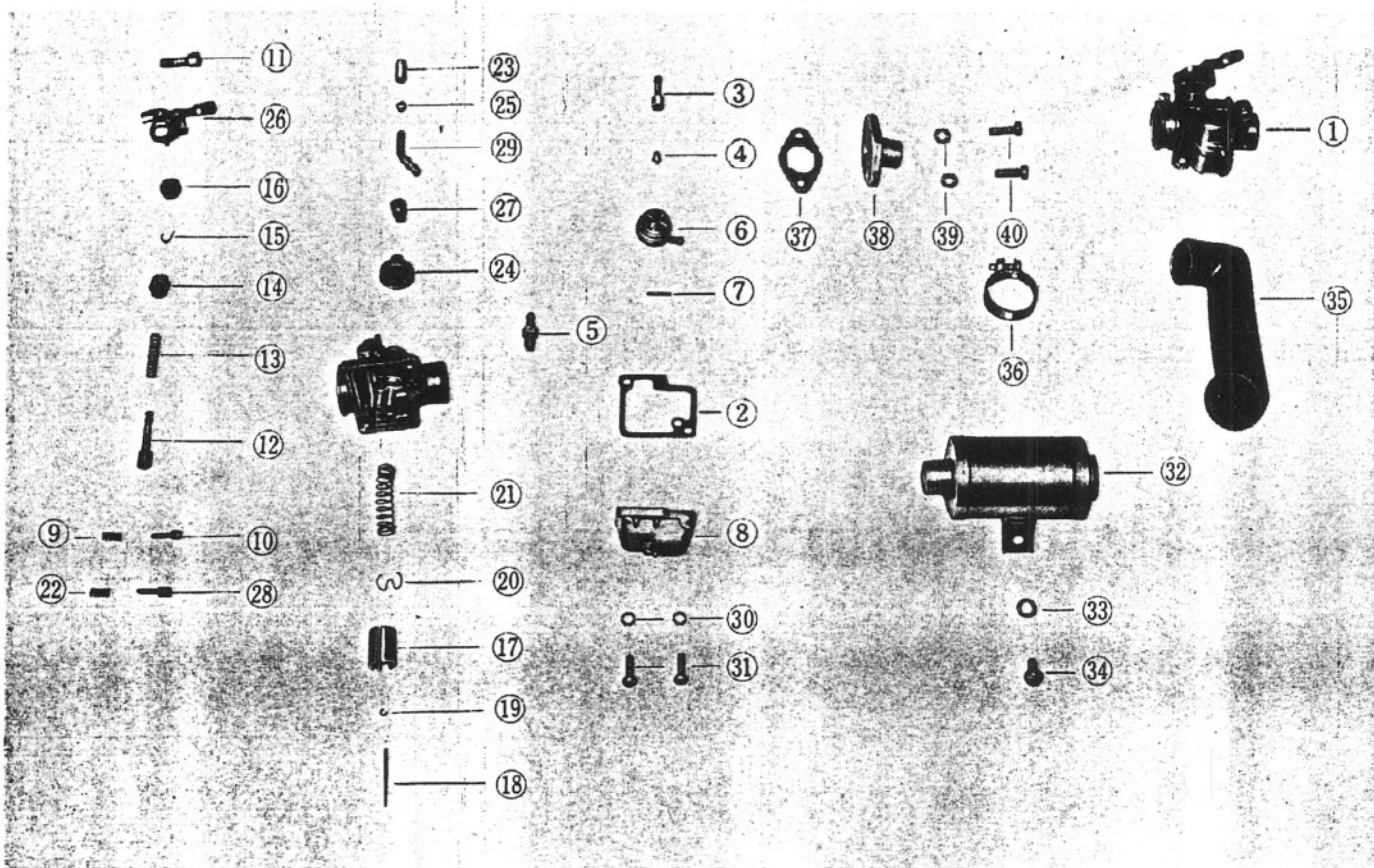


Ref. No.	Parts No.	Part Name	Q'ty	Description	S · R	Remarks
1	619-24100-00	FUEL TANK COMP	1			
2	619-44188-00	MOLD, fuel tank	1			
3	603-24181-00	DAMPER, locating	1			
4	91290-06015	BOLT	4			
5	612-82361-00	CLAMP, cord	1			
6	615-24610-00	CAP ASS'Y	1			
7	615-24611-00	BODY, cap	1			
8	615-24631-00	SCREW, air	1			
9	611-24632-00	GASKET, air screw	1			
10	615-24618-00	LOCK	1			
11	611-24612-00	PACKING, cap	1			
12	615-24636-00	BUSHING	1			
13	92504-04008	SCREW, pan head	2			
14	92990-04100	WASHER, spring	2			
15	603-24637-01	SPRING	1			
16	92990-04200	WASHER, plain	1			
17	615-24635-00	SPRING, safety	1			
18	615-24167-00	STRAINER	1			
19	603-26311-00	WIRE, throttle	1			
20	603-42136-00	LEVER, throttle	1			
21	101-24356-00	CLIP, pipe	2			
22	603-24311-00	PIPE 1	1			





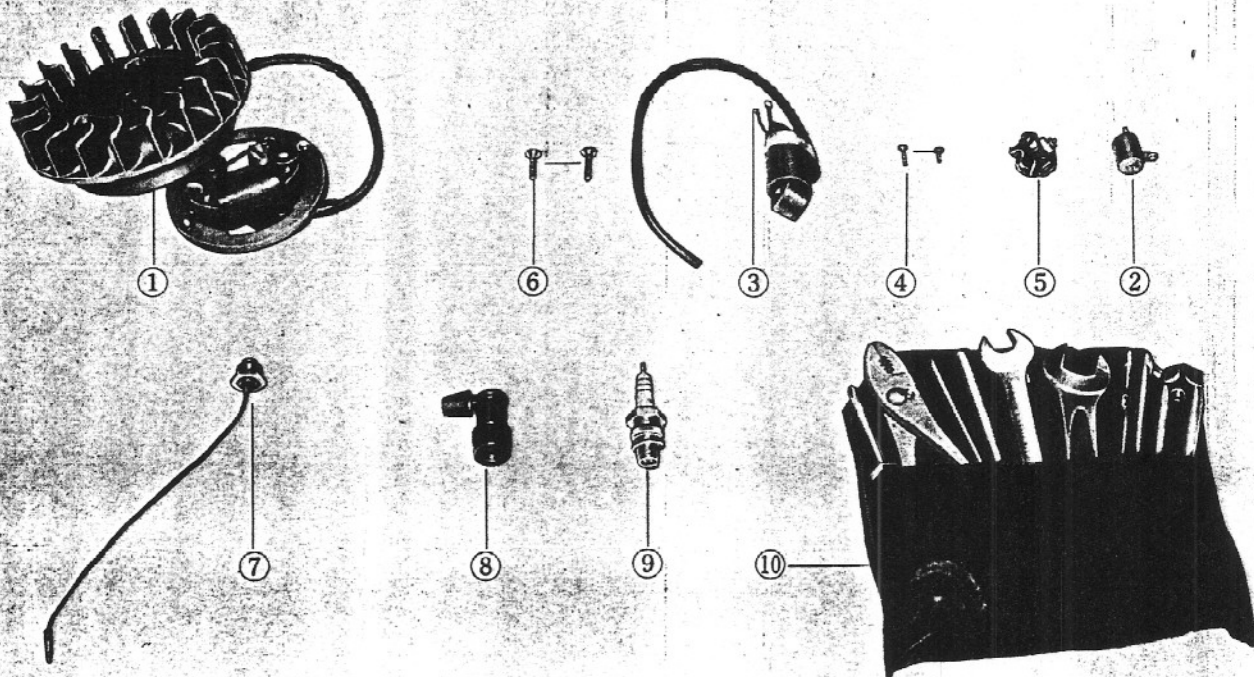
## 6. Carburetor & Air cleaner



Ref. No.	Parts No.	Part Name	Q'ty	Description	S · R	Remarks
1.....	619-14101-00.....	CARBURETOR ASS'Y .....	1.....			
2.....	603-14184-00.....	· GASKET, float chamber .....	1.....			※
3.....	603-14141-10.....	· NOZZLE, main.....	1.....	E-0		※
4.....	127-14143-14.....	· JET, main .....	1.....	70		※
5.....	127 14190-15.....	· VALVE SEAT ASS'Y .....	1.....	1.5		※
6.....	603-14185-00.....	· FLOAT.....	1.....			※
7.....	603-14186-00.....	· PIN, float .....	1.....			※
8.....	603-14181-00.....	· BODY, float chamber .....	1.....			※
9.....	603-14134-00.....	· SPRING, air adjusting .....	1.....			※
10.....	127-14123-00.....	· SCREW, air adjusting .....	1.....			※
11.....	603-14125-00.....	· SCREW, body fitting .....	1.....			※
12.....	603-14171-00.....	· PLUNGER, starter .....	1.....			※
13.....	603-14135-00.....	· SPRING, plunger .....	1.....			※
14.....	603-14174-00.....	· CAP, plunger .....	1.....			※
15.....	152-14138-00.....	· CLIP, plunger .....	1.....			※
16.....	132-14173-00.....	· COVER, plunger cap.....	1.....			※
17.....	603-14112-20.....	· VALVE, throttle.....	1.....	2.0		※
18.....	127-14116-08.....	· NEEDLE .....	1.....	3G8-3		※
19.....	102-14137-00.....	· CLIP.....	1.....			※
20.....	127-14136 00.....	· SEAT, spring .....	1.....			※
21.....	603-14131-00.....	· SPRING, throttle valve .....	1.....			※
22.....	603-14133-00.....	· SPRING, throttle stop .....	1.....			※



# 7. Magneto & Tools



Ref. No.	Parts No.	Part Name	Q'ty	Description	S · R	Remarks
1.....	603-81300-20.....	FLYWHEEL MAGNETO ASS'Y .....	1.....			
2.....	603-81326-20.....	CONDENSER.....	1.....			
3.....	603-81311-20.....	COIL, ignition .....	1.....			
4.....	92503-04018 .....	SCREW, pan head .....	2.....			
5.....	603-81321-20.....	CONTACT BREAKER ASS'Y .....	1.....			
6.....	92203-05018 .....	SCREW, flat head .....	2.....			
7.....	603-82550-00.....	STOP SWITCH ASS'Y.....	1.....			
8.....	603-8271-01 .....	CAP, plug .....	1.....			
9.....	94701-00003 .....	PLUG, spark.....	1.....	B-7H		
10.....	603-28100-00.....	TOOL ASS'Y .....	1.....			

P 3 5

PARTS LIST USA

Second edition, MARCH, '68



YAMAHA MOTOR CO., LTD.

HAMAMATSU, JAPAN